

# ECNAND Controller IP Core Setup

---

## Installation Guide



**System Level Solutions, Inc. (USA)**  
14100 Murphy Avenue  
San Martin, CA 95046  
(408) 852 - 0067

<http://www.slscorp.com>

IP Core Version: 1.0  
Document Version: 1.0  
Document Date: May 2015

## Introduction

This installation guide familiarizes you with the contents of the ECNAND Controller IP Core setup.

Table below shows the revision history of the installation guide.

Version	Date	Description
1.0	May 2015	First release

## How to Contact SLS

For the most up-to-date information about SLS products, go to the SLS worldwide website at <http://www.slscorp.com>. For additional information about SLS products, consult the source shown below.

Information Type	E-mail
Product literature services, SLS literature services, Non-technical customer services, Technical support.	<a href="mailto:support@slscorp.com">support@slscorp.com</a>

---



---

<i>About this Guide</i> .....	<i>ii</i>
Introduction .....	ii
How to Contact SLS .....	ii
<b>Software Installation</b> .....	<b>1</b>
Installing ECNAND Controller IP Core .....	1
Step1: Preparing to Install.....	1
Step2: Welcome to the SLS ECNAND Controller IP Installation Wizard.....	1
Step3: License Agreement .....	2
Step4: Choosing Destination Location .....	3
Step5: Start Copying the Program Files .....	3
Step5: License Information.....	4
Step6: Finish Installation .....	4
Step7: SLS ECNAND Controller ReadMe.....	5

## Installing ECNAND Controller IP Core

This Installation Steps guides the user through the installation process of SLS ECNAND Controller IP Core.



We assume that following software are installed on your pc.

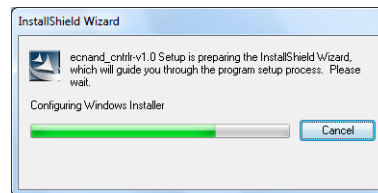
- Windows 2000/XP
- Quartus II 11.0, Nios II EDS 11.0

The ECNAND Controller IP Core is provided as a setup for using it in various designs. Following steps shows the installation procedure for the IP Core setup file on your system.

### Step1: Preparing to Install

Double click on the **ecnand\_cntrlr-v<IP Core Setup version#>.exe** file. It displays the message as shown in [Figure- 1](#).

*Figure -1. Install SLS ECNAND Controller*



### Step2: Welcome to the SLS ECNAND Controller IP Installation Wizard

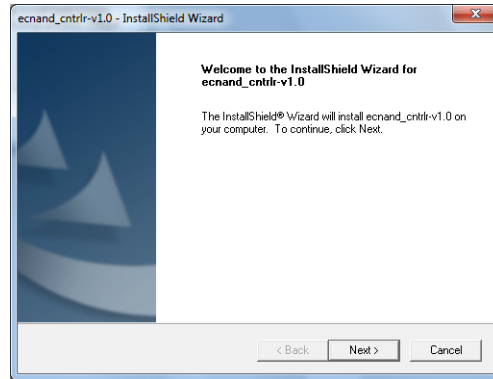
Then the next window appears showing the message, **‘Welcome to the SLS ecnand\_cntrlr-v<IP Core Setup version#> Installshield Wizard’** appears as shown in [Figure- 2](#). There are three options available, **‘Back’**, **‘Next’** and **‘Cancel’**. Choose the correct option as per the requirement.

1. Choose **‘Back’** to go to previous window.
2. Choose **‘Next’** to continue the installation.

3. Choose **'Cancel'** to end the setup for installation. Selecting this option pops up a message window having options, **'Yes'** and **'No'**.
  - To continue the installation choose **'No'**.
  - To exit setup choose **'Yes'**.

---

*Figure -2. Welcome SLS ECNAND Controller IP Setup Wizard*



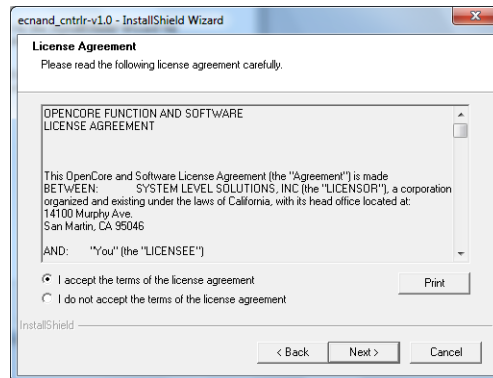
---

### Step3: License Agreement

The setup shows a **“License Agreement”** window. Accept the agreement in order to continue with setup. Select **“I accept the terms of license agreement”** option after reading the License terms as shown in [Figure- 3](#).

---

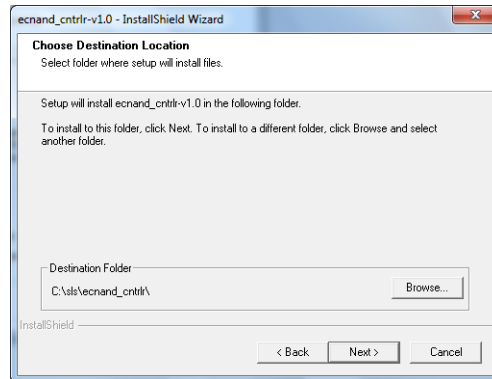
*Figure -3. License Agreement*



## Step4: Choosing Destination Location

The “**Choose Destination Location**” window appears asking the installation directory for ECNAND Controller IP Core. See [Figure- 4](#). For installing to a different folder, click “**Browse**” button. Choose ‘**Next**’ to continue the setup.

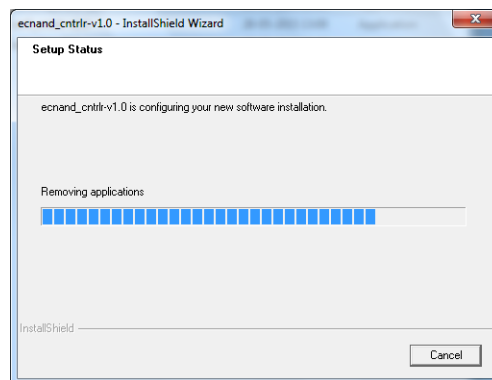
*Figure -4. Choose Destination Location*



## Step5: Start Copying the Program Files

It starts copying the IP Core files to the directory selected. See [Figure- 5](#).

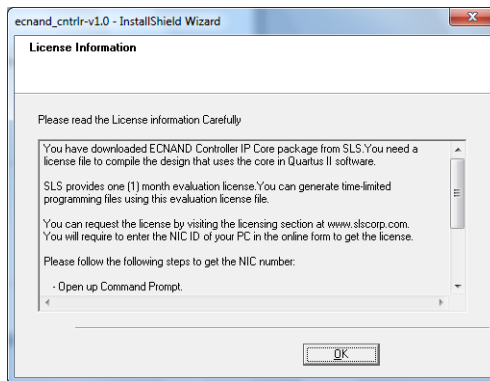
*Figure -5. Setup Status*



## Step5: License Information

After copying the files, the “**License Information**” window explaining the steps to request the license for IP Core. See [Figure- 6](#). Choose ‘**Next**’ to go to finish window.

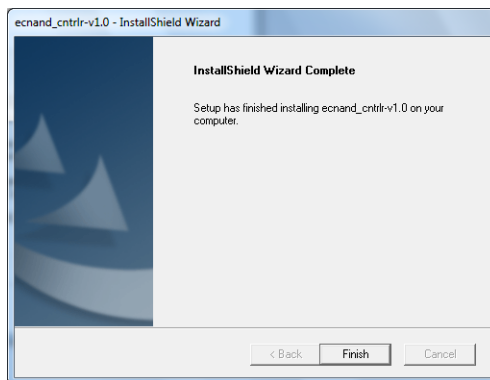
*Figure -6. License Information*



## Step6: Finish Installation

As the installation completes, last window will appear as shown in [Figure- 7](#). Choose ‘**Finish**’ to exit from the installation window.

*Figure -7. Installshield Wizard Complete*



## Step7: SLS ECNAND Controller ReadMe

After successful installation of the SLS ECNAND Controller IP Core, it opens the ReadMe file. See [Figure- 8](#).

*Figure 8. SLS ECNAND Controller IP Core After Installation*



To verify the proper installation of ECNAND Controller IP core, make sure that the installed IP Core directory structure is same as the directory structure specified in the ReadMe file.

[Table 1](#) lists ECNAND Controller IP Core installation directory content and their description. The default Windows installation directory is **c:\sls**.

*Table 1. Installed Directory Contents*

Directory Name	Description of Contents
documents	Contains technical documents such as User Guide, Tutorial based on Qsys system for the ECNAND Controller IP Core and readme help files.
embedded	Contains sample source files for applications with Nios II.
example	Contains example to use ECNAND compatible NAND FLASH devices which includes source file and header file.
hardware	Contains encrypted ECNAND Controller IP Core design files and ready to use reference designs for the IP Core.



*Table 1. Installed Directory Contents*

Directory Name	Description of Contents
component	Contains encrypted ECNAND Controller IP Core design files.
ref_design	Contains ECNAND Controller IP Core reference design for SLS USB 3.0 Development Board.